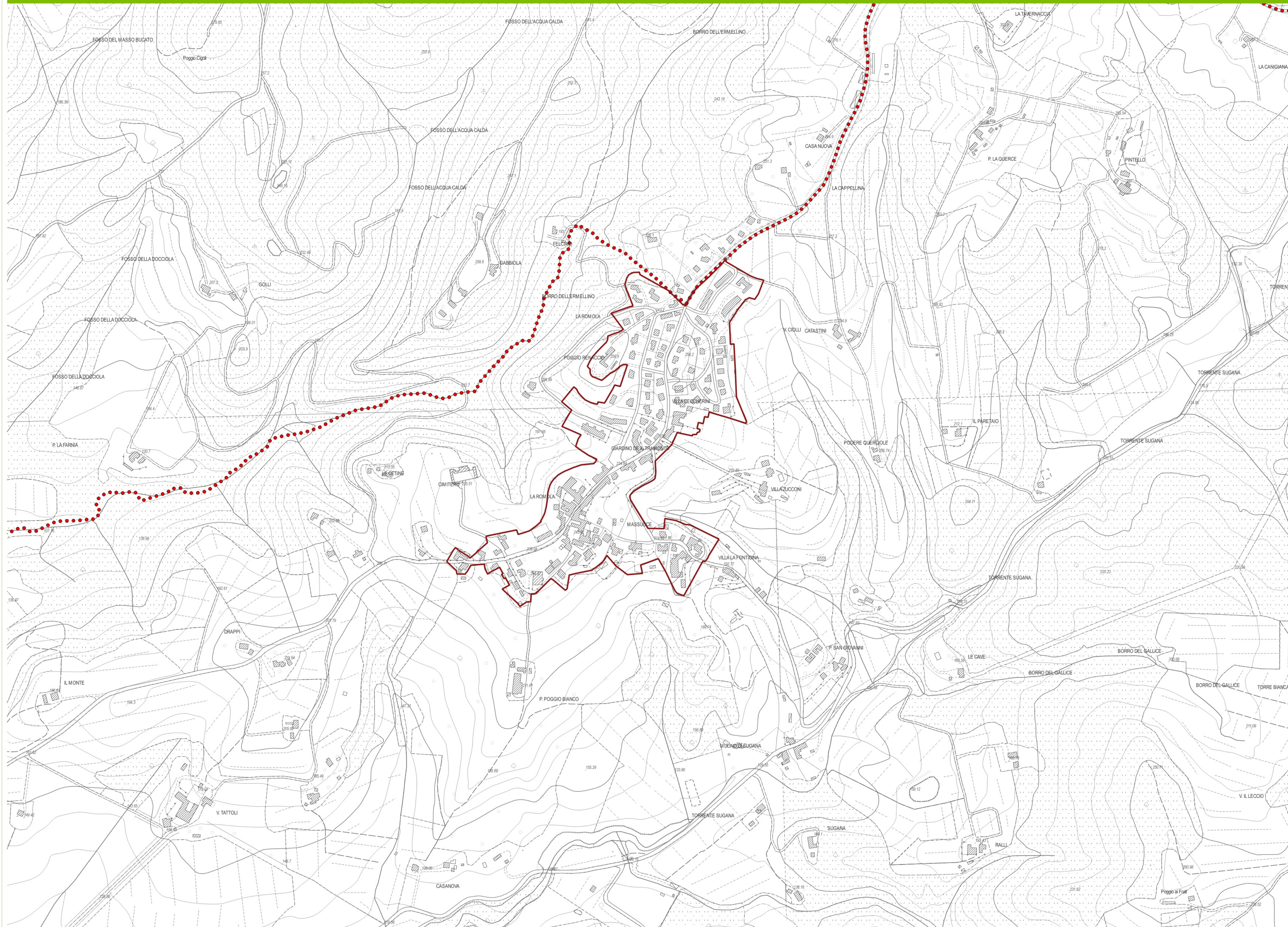
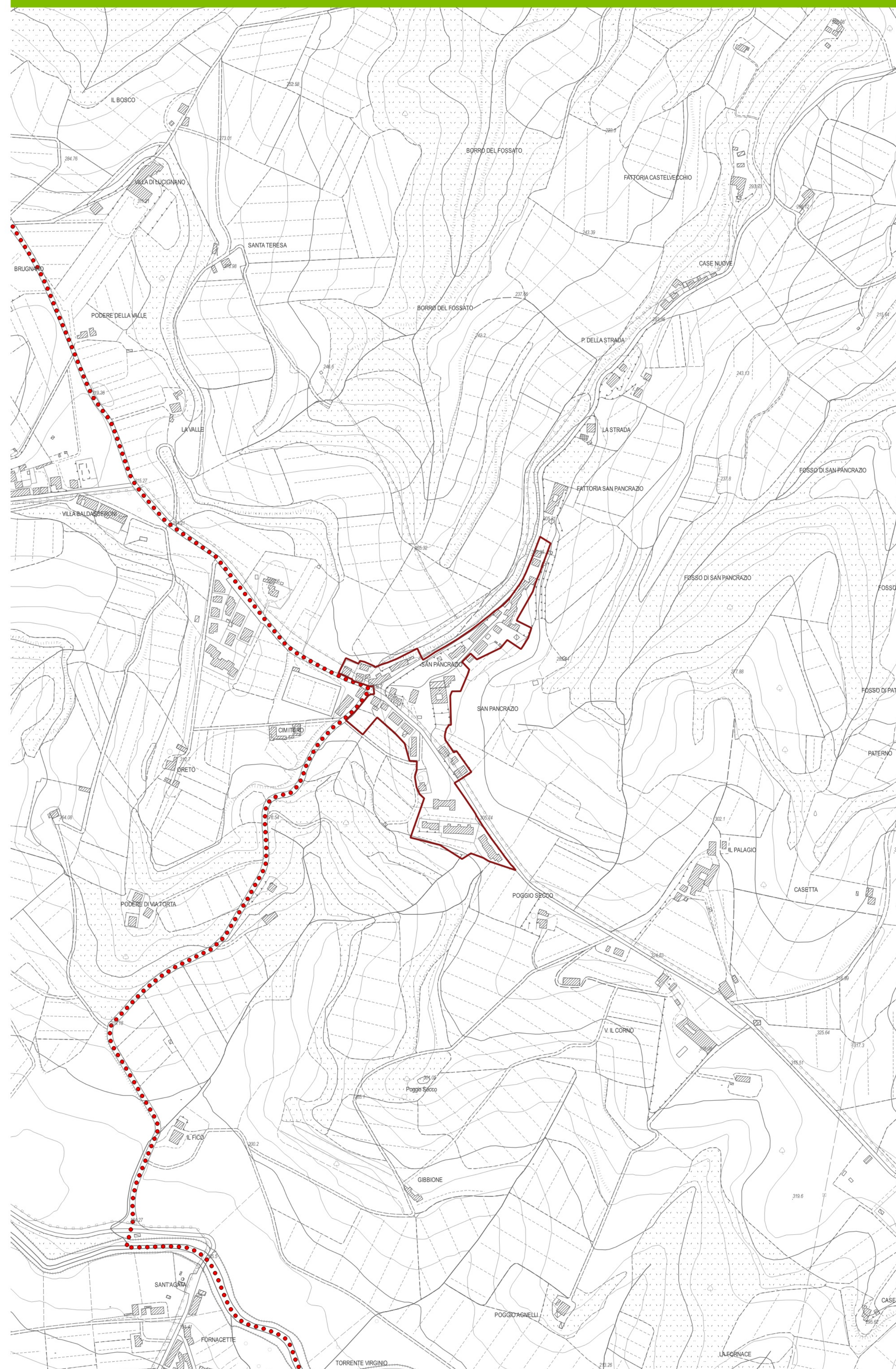


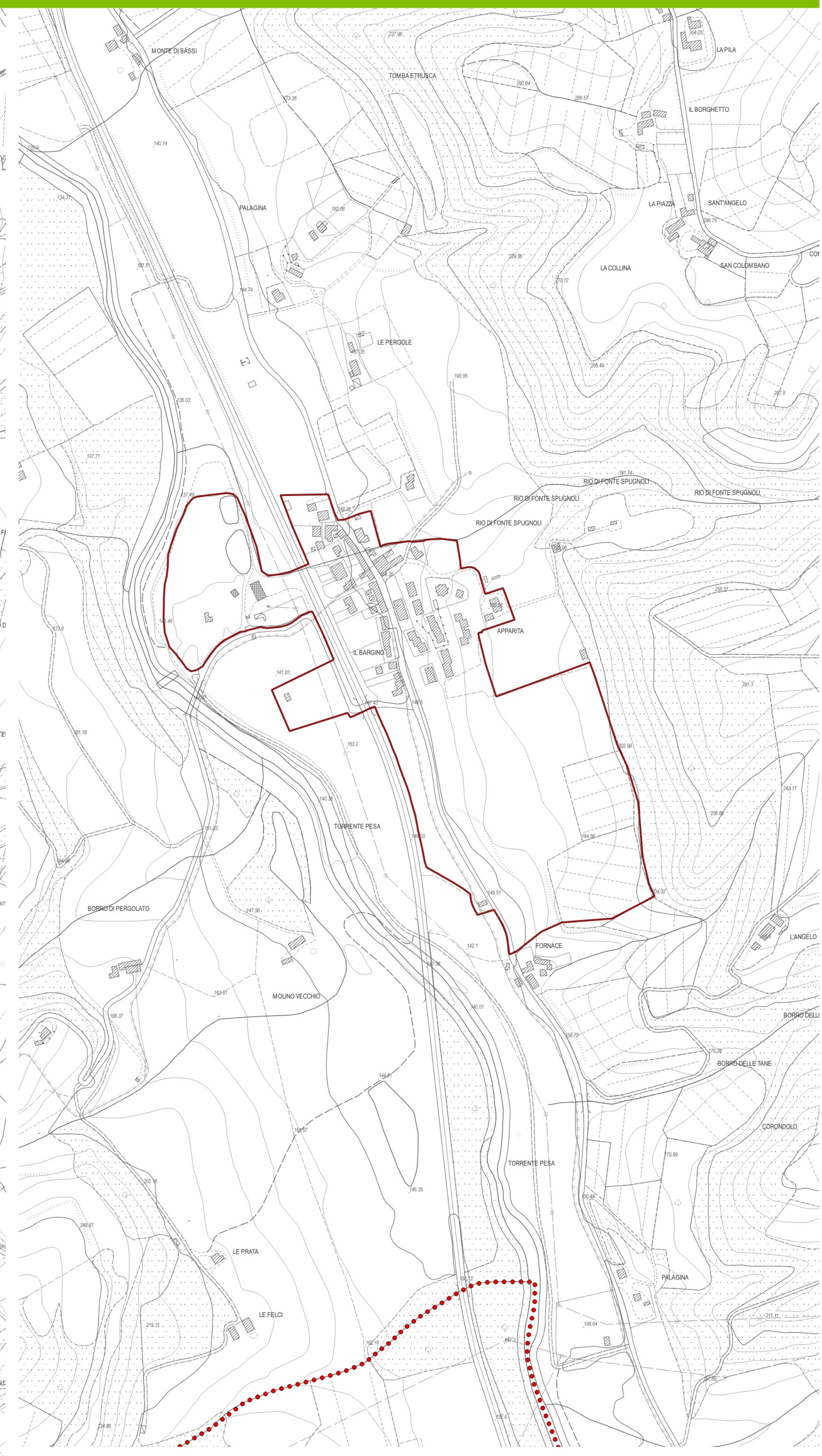
LA ROMOLA



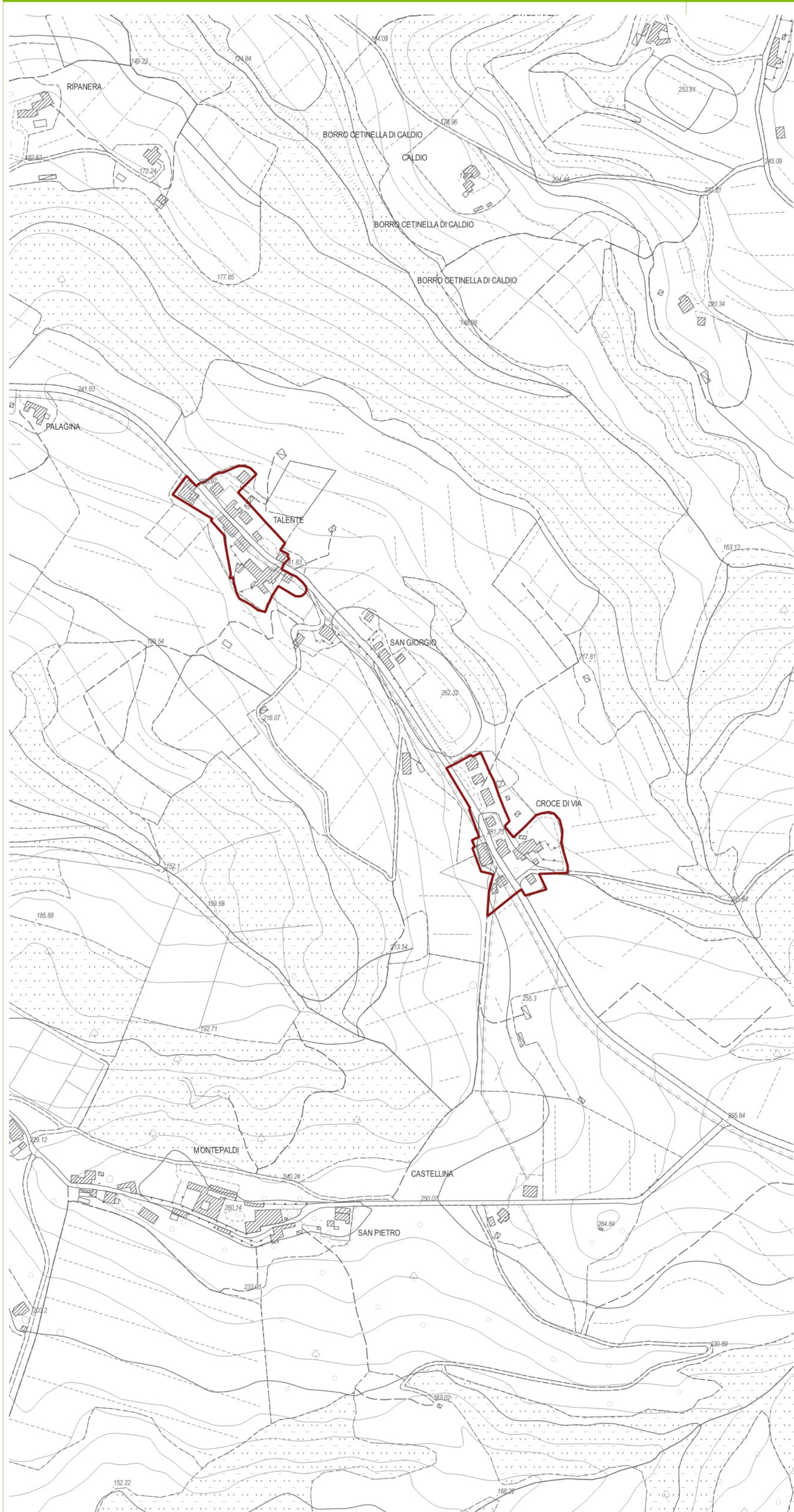
SAN PANCRAZIO



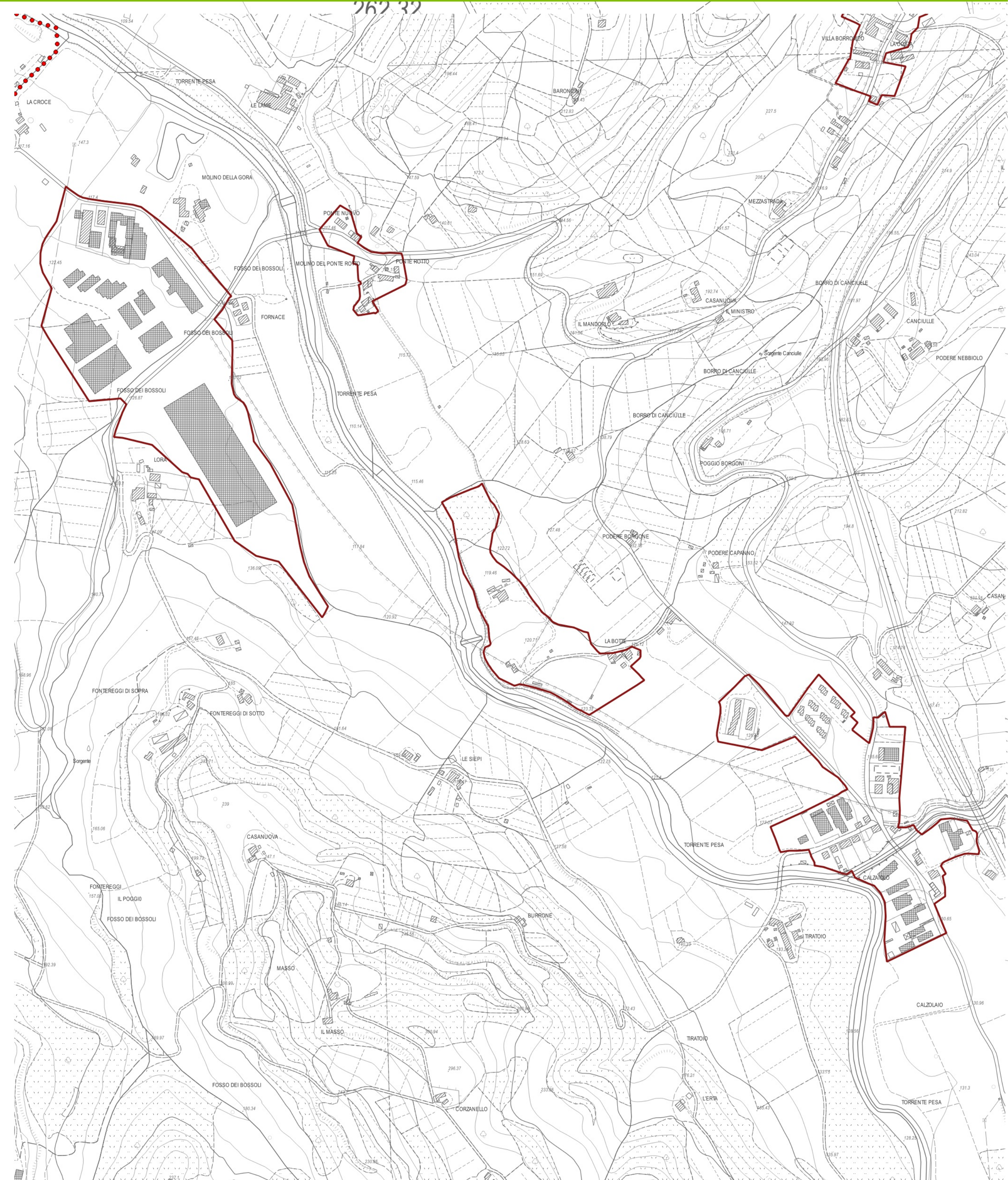
BARGINO



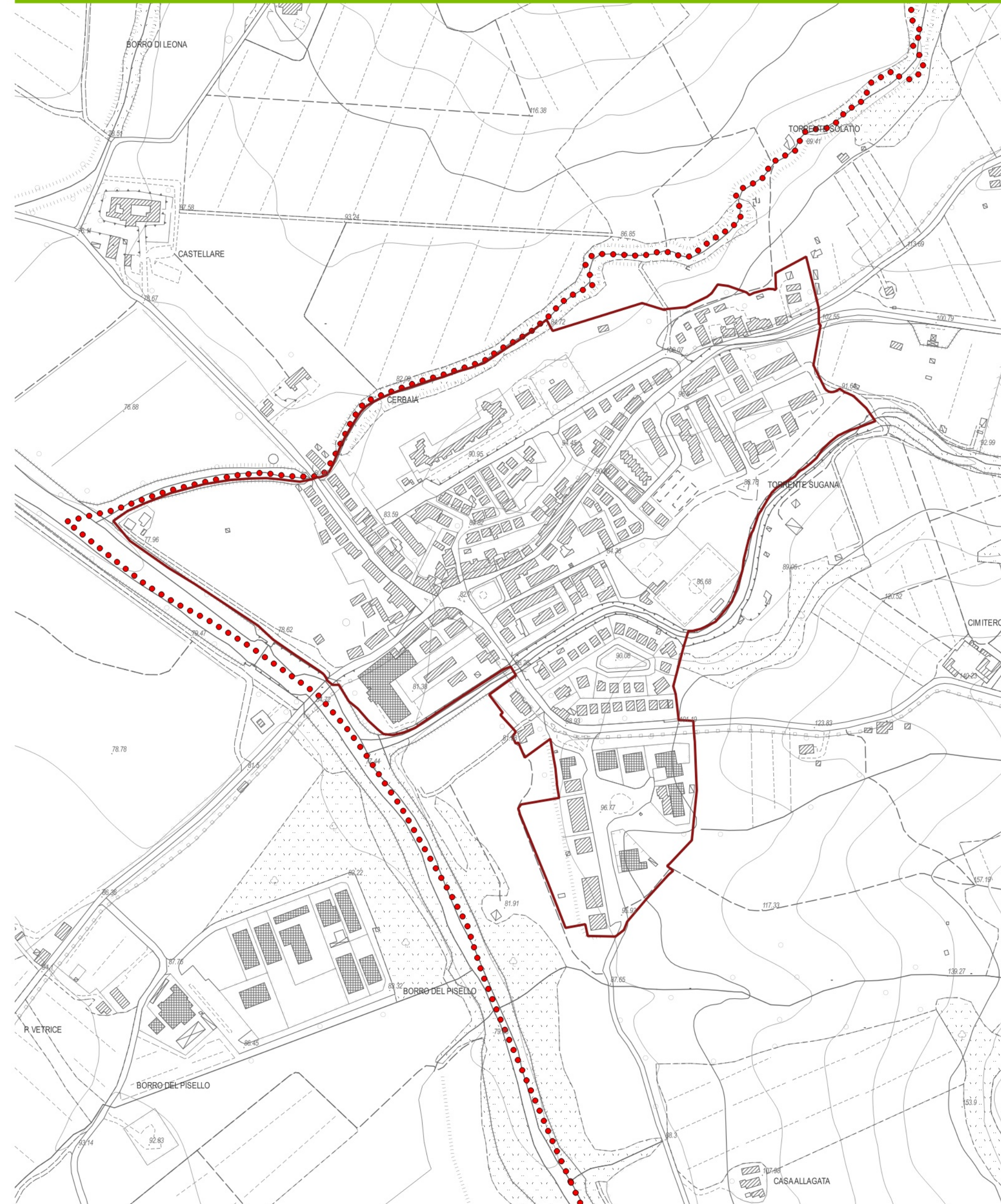
TALENTE - CROCE DI VIA



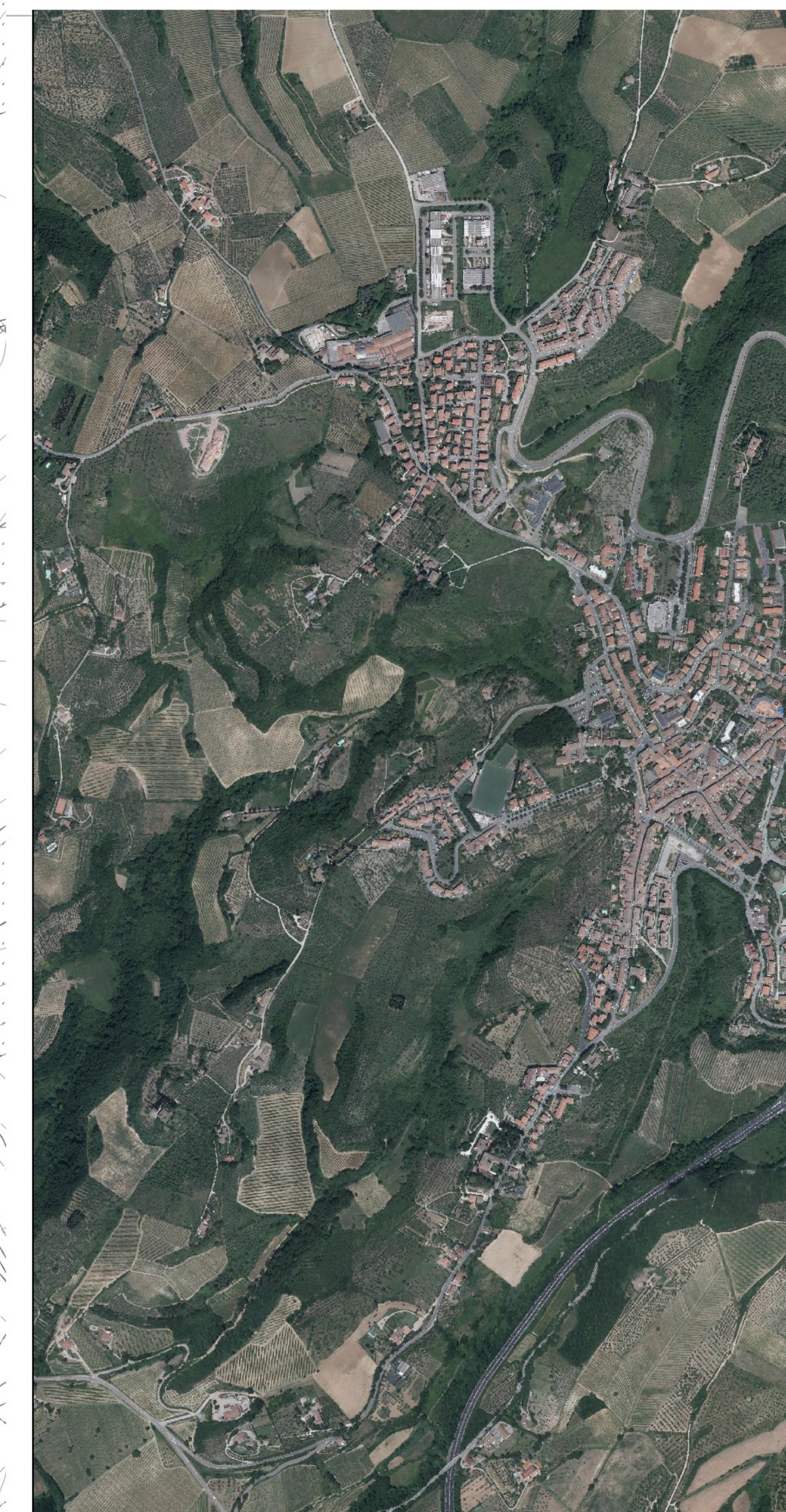
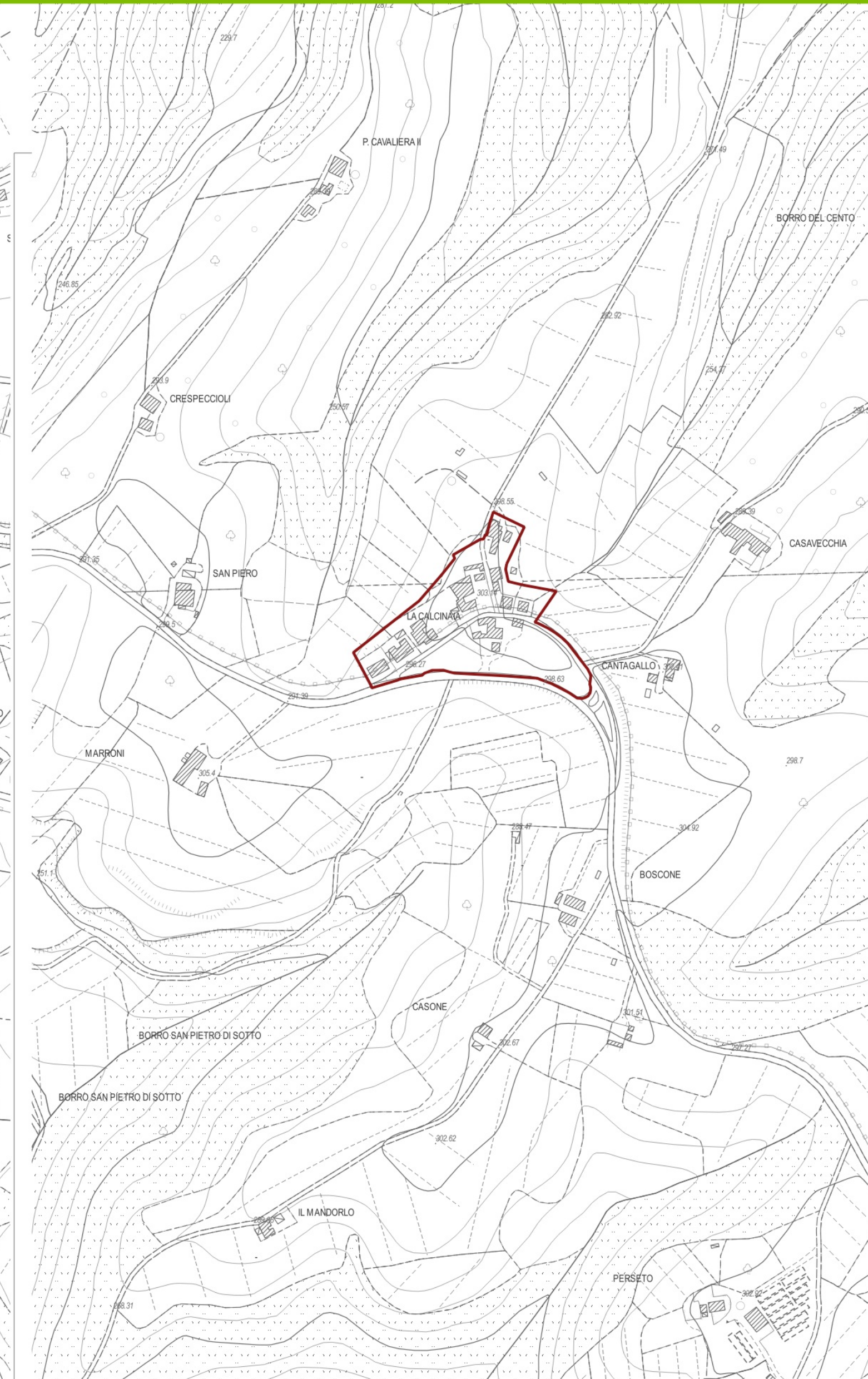
PONTEROTTO CALZAIOLA



CERBATA



CALCINATA



PS 2018
Piano Strutturale
 Legge regionale 65/2014 s.s.l.
PIANO STRUTTURALE
 La perimetrazione del territorio urbanizzato - quadro 2

ELAB. PS
 TAV. P02.5
 scala 1:5.000
 Gennaio 2019

Sindaco
 Massimo Piselli

Assessore all'Urbanistica
 Daniela Viani

Segretario Comunale

Responsabile del Procedimento
 Arch. Barbara Ronchi

Dirigente della Comunicazione
 Diletta Chianelli Scudafalini

Ufficio Urbanistica
 Arch. Silvia Caporali

Responsabile del Coordinamento Locale
 Arch. Franco Mugnai

Adattato con

Approvato con

Responsabile Coordinamento Generale
 Urbanista Daniela Fallo

Responsabile Coordinamento Locale
 Arch. Franco Mugnai

Urbanistica
 Urbanista Daniela Fallo
 Urbanista Fabrizio Romani
 SPT Cartografica
 Urbanista Lisa De Gasper

IMS
 Ingegnere Elena Lovatelli
 Ingegnere Chiara Locatelli
 Coordinatore specializzato
 DSA Per. Gabriele Trabacchi